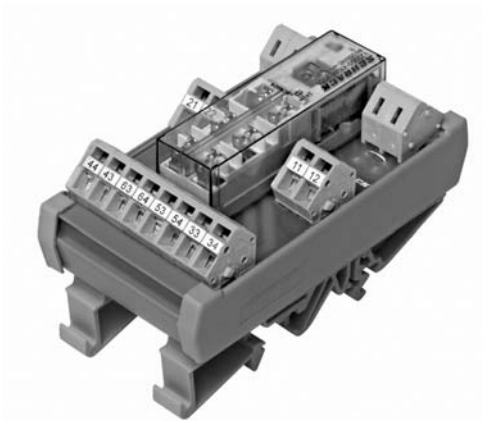


Safety Relay on DIN-rail SR6 Z

6 pole 8 A



F0238-B

Features

- SR6 on printed circuit board
- AC/DC input
- Spring connectors
- Module width 46 mm

Applications

Elevator control, machine control



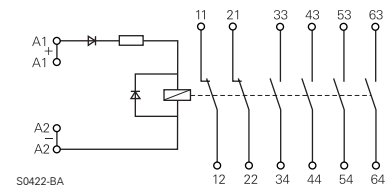
Technical data of approved types on request

Contact data

Type of contact	single contact, forcibly guided type A according to EN50205
Maximum switching current / continuous thermal load	8 A
Rated voltage / max. breaking voltage	240 Vac / 240 Vac
Maximum breaking capacity AC	2000 VA
Contact material	AgSnO ₂
Minimum contact load	> 50 mW
Contact resistance	≤100 mΩ / 1 A / 24 Vdc ≤20 Ω / 10 mA / 5 Vdc

Terminal assignment

DC module, 4 N/O+2 N/C version

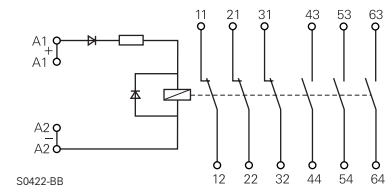


S0422-BA

Coil data

DC energizing voltage U _{nom}	6, 12, 18, 21, 24, 36, 40, 48, 60, 115 Vdc
AC/DC energizing voltage U _{nom}	12, 21, 24, 40, 48, 60, 115 Vac/Vdc
AC energizing voltage U _{nom}	230 Vac
Input circuit	bridge rectifier, series resistor
Minimum operate voltage	90% of U _{nom}
Minimum release voltage (+23°C)	≤10% of U _{nom}
Maximum permissible operating voltage	110% of U _{nom}

DC module, 3 N/O+3 N/C version

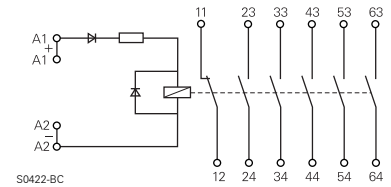


S0422-BB

Insulation

Surge voltage resistance coil-contacts	open contact circuit	3000 V _{rms}
	adjacent contacts	1000 V _{rms}
	adjacent contacts	2000 V _{rms}
Clearance / creepage coil-contact	coil-contact	5.5 / 5.5 mm
	adjacent contacts	3 / 3 mm
Insulation to IEC 60664		
Voltage rating		250 V
Pollution degree		2
Overvoltage category		III

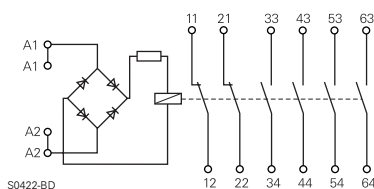
DC module, 5 N/O+1 N/C version



S0422-BC

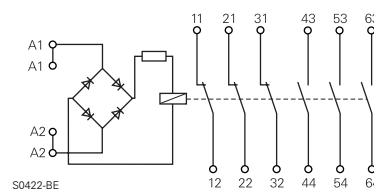
Edition: 02/2004

AC/DC module, 4 N/O+2 N/C version



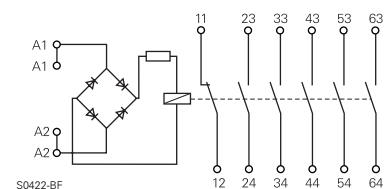
S0422-BD

AC/DC module, 3 N/O+3 N/C version



S0422-BE

AC/DC module, 5 N/O+1 N/C version



S0422-BF

Rights to change data / design reserved

Safety Relay on DIN-rail SR6 Z

6 pole 8 A

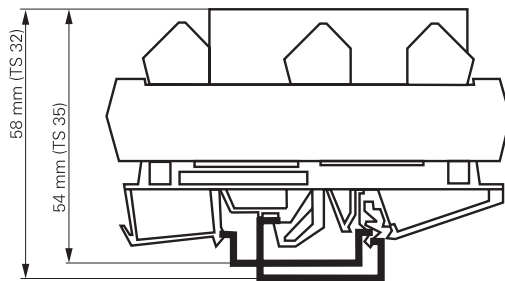
Other data

Flammability class according to UL 94	
housing	V2
housing cage clamp terminals	V0
PCB	V0
relay base	V0
relay cover	V2
Ambient temperature	-25...+50 °C
Mechanical life	≥ 10x10 ⁶ operations
Max. switching rate at rated- / minimum load	6 min ⁻¹ / 150 min ⁻¹
Connections (according IEC)	
solid wire	0.2...2.5 mm ²
stranded wire	0.2...2.5 mm ²
AWG	28...14
Installation position	any
Mounting	in rows with zero spacing
Type of connection	spring clamp connection
Relay weight	90 g
Packaging unit	2 pcs.

Dimensions

Dimensions in mm

Module width 46 mm
Module length 87 mm



Fit onto mounting rails according to
DIN EN 50022 or DIN EN 50035

S0423-AA

Product key



Type

Contact configuration

- A** 3 N/O + 3 N/C contacts
- B** 4 N/O + 2 N/C contacts
- C** 5 N/O + 1 N/C contacts

Coil

DC coil code = nominal voltage (e.g. 024=24Vdc)
AC/DC coil code: 524=24Vac/dc, 615=115Vac/dc
AC coil code: 730=230Vac

Other types on request

Product key	Type	Contact configuration	Contact material	Coil	Part number
SR6ZA024	6-pole safety relay module	3 N/O + 3 N/C contacts	AgSnO	24 Vdc	7-1415033-1
SR6ZA524				24 Vac/dc	9-1415059-1
SR6ZA615				115 Vac/dc	0-1415060-1
SR6ZA730	4 N/O + 2 N/C contacts	4 N/O + 2 N/C contacts	AgSnO	230 Vac	1-1415060-1
SR6ZB024				24 Vdc	5-1415033-1
SR6ZB524				24 Vac/dc	2-1415060-1
SR6ZB615	115 Vac/dc	6-1415046-1			
SR6ZB730	230 Vac	3-1415060-1			
SR6ZC024	5 N/O + 1 N/C contacts	5 N/O + 1 N/C contacts	AgSnO	24 Vdc	3-1415042-1
SR6ZC524				24 Vac/dc	4-1415060-1
SR6ZC615				115 Vac/dc	5-1415060-1
SR6ZC730				230 Vac	6-1415060-1