

# Power Relay RM C/D

1 pole 30 A, DC- or AC-coil



F0166-A

## Features

- 1 N/O or 1 N/O + 1 N/C contact
- Switching capacity up to 7200 VA
- DC- or AC-coil
- Push-to-test-button
- Chassis mount

## Applications

Battery chargers, heating control

Contact data	RMC	RMD
Configuration	1 N/O and 1N/C	1 N/O
Type of contact	single contact, bridging contact	
Rated current	30 A	
Rated voltage / max.breaking voltage AC	250 Vac / 380 Vac / 440 Vac	
Maximum breaking capacity AC	7500 VA	
Make current (max. 4 s at duty cycle 10%)	60 A	
Contact material	AgCdO	

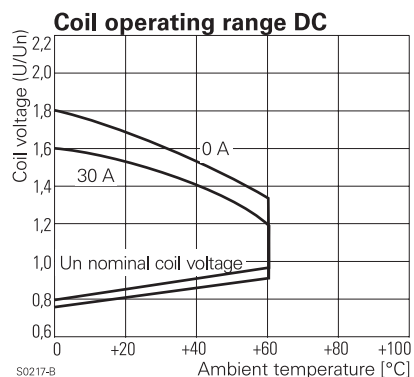
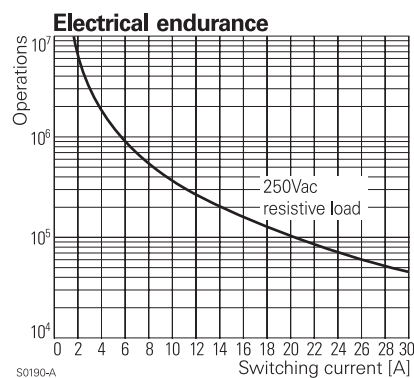
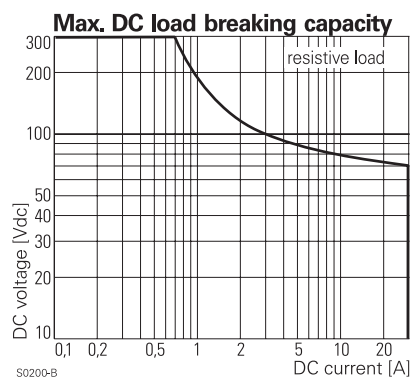
Coil data		
Nominal voltage	DC coil	6...220 Vdc
	AC coil	6...400 Vac
Nominal coil power	DC coil	1.2 W
	AC coil	2.8 VA

## Coil versions, DC-coil, RMC, RMD

Coil code	Nominal voltage	Pull-in voltage	Release voltage	Coil resistance	Coil current		
STD	LED PD*	LED PD*	Vdc	Vdc	Vdc	$\Omega$	mA
006	L06 OA6	LA6	6	4.5	0.6	32±10%	187.5
012	L12 OB2	LB2	12	9.0	1.2	110±10%	109.1
<b>024</b>	<b>L24 OC4</b>	<b>LC4</b>	<b>24</b>	<b>18.0</b>	<b>2.4</b>	<b>475±10%</b>	<b>50.5</b>
048	L48 OE8	LE8	48	36.0	4.8	2000±10%	24.0
060	L60 OG0	LG0	60	45.0	6.0	2850±10%	21.1
110	M10 1B0	MB0	110	82.5	11.0	10000±12%	11.0
221	N21 2C1	NC1	220	165.0	22.0	40000±15%	5.5

All figures are given for coil without preenergization, at ambient temperature +20°C

\* Protection diode PD; standard polarity: +A1 / -A2



# Power Relay RM C/D

1 pole 30 A, DC- or AC-coil

## Coil versions, AC-coil, RMC, RMD

Coil code	LED	Nominal voltage Vac	Pull-in voltage Vac	Release voltage Vac	Coil resistance $\Omega$	Coil current mA
<b>524</b>	<b>R24</b>	<b>24</b>	<b>19.2</b>	<b>9.6</b>	<b>80<math>\pm</math>10%</b>	<b>109.2</b>
548	R48	48	38.4	19.2	320 $\pm$ 10%	54.2
560	R60	60	48.0	24.0	500 $\pm$ 10%	43.7
615	S15	115	92.0	46.0	1850 $\pm$ 10%	23.0
<b>730</b>	<b>T30</b>	<b>230</b>	<b>184.0</b>	<b>92.0</b>	<b>7500<math>\pm</math>10%</b>	<b>11.7</b>
900	V00	400	320.0	160.0	23500 $\pm$ 15%	6.5

All figures are given for coil without preenergization, at ambient temperature +20°C

## Insulation

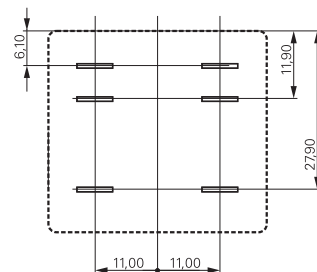
Dielectric strength	coil-contacts	2500 V <sub>rms</sub>
	open contact circuit	1500 V <sub>rms</sub>
	adjacent contacts	4000 V <sub>rms</sub>
Clearance / creepage	$\geq 2.8 / 4$ mm	
Insulation to VDE 0110b (2/79)		
Insulation category / reference voltage	C / 250	

## Other data

Ambient temperature	DC-coil	-45...+60 °C
	AC-coil	-45...+40 °C
Mechanical life	>10x10 <sup>6</sup> operations	
Max. switching rate at rated- / minimum load	16 min <sup>-1</sup> / 100 min <sup>-1</sup>	
Operate- / release time	approx. 17 / 18 ms	
Bounce time	approx. 4 ms	
Vibration resistance N/O / N/C contact	>10 / 5 g, 30...150 Hz	
Category of protection (IEC 61810)	RT I - dust protected	
Relay weight	81 g	
Packaging unit	10 pcs.	

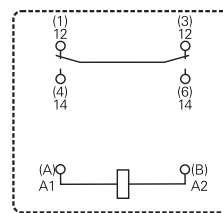
## Terminal assignment

View on solder pins  
Dimensions in mm



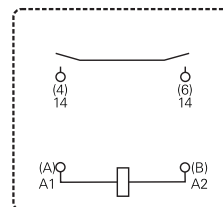
S0269-AK

1 N/O and 1 N/C contact, RMC



S0269-AH

1 N/O contact, RMD



S0269-AI

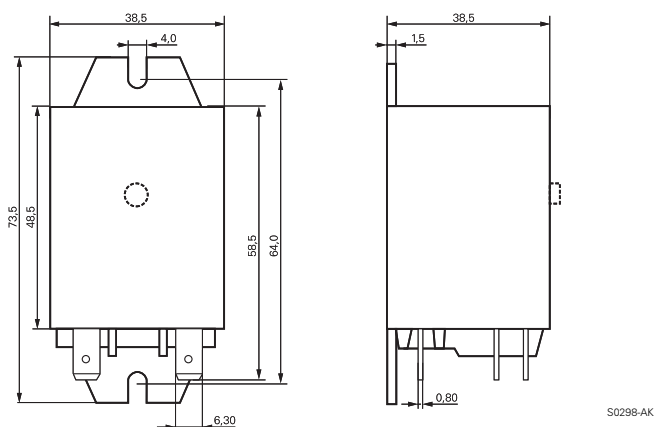
# Power Relay RM C/D

1 pole 30 A, DC- or AC-coil

## Dimensions

Dimensions in mm

Cover with mounting brackets, 6.3 mm Faston



## Product key



Type

Contacts

**C** 1 N/O contact and 1 N/C contact, 30 A

**D** 1 N/O contact, 30 A

Version

**0** without test button

**3** with test button

Mounting

**5** cover with mounting brackets, 6.3mm Faston terminals

Coil

Coil code: please refer to coil versions table, preferred types in bold print

Product key	Contacts	Version	Enclosure	Coil	Coil	Part number
RMC05024	1 N/O + 1 N/C contact 30 A	without test button	mounting brackets 6.3mm Faston	DC-coil	24 Vdc	4-1393844-5
RMC05524		with test button		AC-coil	24 Vac	0-1393146-5
RMC05615	1 N/O contact 30 A	without test button			115 Vac	8-1393147-7
RMC05730					230 Vac	0-1393146-6
RMC35024				DC-coil	24 Vdc	0-1393146-7
RMD05024	1 N/O contact 30 A	without test button			24 Vdc	0-1393146-9
RMD05524				AC-coil	24 Vac	1-1393146-1
RMD05615	1 N/O contact 30 A	with test button			115 Vac	0-1415009-1
RMD05730					230 Vac	4-1393844-7
RMD35024				DC-coil	24 Vdc	2-1419136-2
RMD35730		AC-coil	230 Vac	0-1393097-5		